

MICHAEL WALLACE ELEMENTARY

April Newsletter

Chocolate Bar Bingo at Michael Wallace School!

Mark your calendars for a fun evening at Michael Wallace School! Join us on April 23rd from 6:00–7:30 PM for our exciting Chocolate Bar Bingo event. We'll be playing 10 games of bingo, with delicious chocolate bars and candy up for grabs as prizes!

Admission is \$2 per person, and bingo cards are \$10 for all 10 games. Bingo dobbers will be available for purchase, and our canteen will be open with snacks and pizza from Little Caesars for sale. Bring your family and friends for a sweet night of fun and community.

Booklets, entrance and Pizza need to be ordered online vis School Cash.
<https://www.schoolcashionline.com/>

We can't wait to see you there!



Important Dates

April

- 15** April Bike Bus
- 22** Administrative Assistant's Day
- Earth Day
- 27** Earth Day Workshops
- 29** No Classes (PD)

May

- 1** Author Visit: Briana Corr Scott
- 6** Weenie Wednesday
- 13** Weenie Wednesday
- 15** Black Excellence Day
- 18** Victoria Day: No Classes
- 20** Weenie Wednesday
- 27** Weenie Wednesday

Bike Bus is BACK!

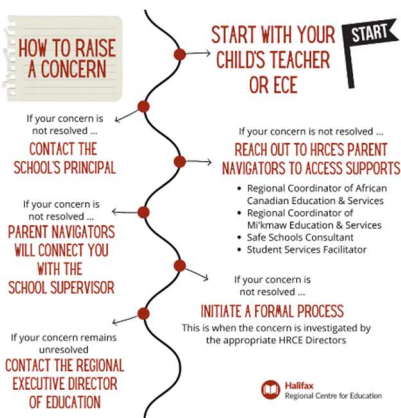
Tuesday April 15th will be this Spring's first Bike to School day. Students and parents can meet at 8:15 at Belvedere Park. Hope to see lots of kiddos on their bikes!

SPRING FAIR!!



Our Annual Spring Fair is just around the corner! As always, we are looking for Volunteers and donations!

Spread the word to family and friends to help make this Spring Fair the most successful yet!



Do you know how to raise a concern?

We want families to feel comfortable reaching out when they have questions or concerns about their child's education or well-being. In most cases, concerns can be resolved quickly by connecting directly with school staff.

If you do have a concern, here are the steps to follow:

- **Start by speaking with your child's teacher or ECE.** They are often best positioned to address questions about your child's learning or classroom experience.

- **If the concern isn't resolved, contact the school principal** to continue the conversation and work toward a solution.
- **If you need additional support, HRCE's Family Navigators are here to help.** They can provide guidance and connect families with helpful resources and supports. They can be reached at connect@hrce.ca.
- **If the concern still isn't resolved,** a formal review process can be requested and the matter will be looked into by the appropriate HRCE Director.
- **The final step** is for the concern to be reviewed by the Regional Executive Director.

You can learn more about the process [here](#) or by reviewing the [Parent/Guardian Concern Policy](#).